

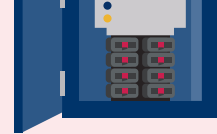
Migrating to an IP access control system

in 10 steps

Want to migrate to an IP-based access control system but not sure where to begin? Follow these 10 steps to ensure success.

Step 1

Create a list of components in your existing system



Location of electrical and telecom closets



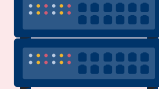
Wiring



The type of power currently in place



Hardware components



Servers



Networking equipment currently being used

Step 2

Evaluate the requirements of the new system

Requirements of the new open, flexible IP-based ACS must be acknowledged:



Hardware components



Wiring



Power



Software components



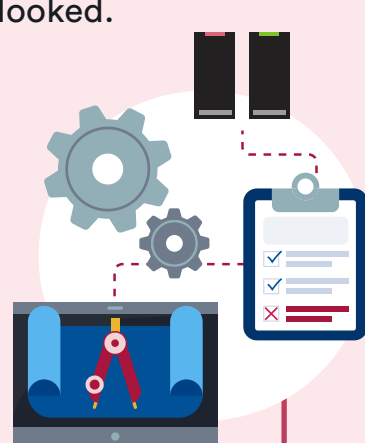
Network configuration

Step 3

Do a site audit

Evaluate the facility with the customer, systems integrator, and possibly with manufacturers to ensure that no part of the existing system has been overlooked.

- ✓ Get a clear picture of the existing architecture and layout of the existing system
- ✓ Determine where equipment is located
- ✓ Measure the distances between access control panels, power sources, and readers



Step 4

Identify reusable components

Can you reuse any of the following?



Hardware



Wiring



Power supply



Software

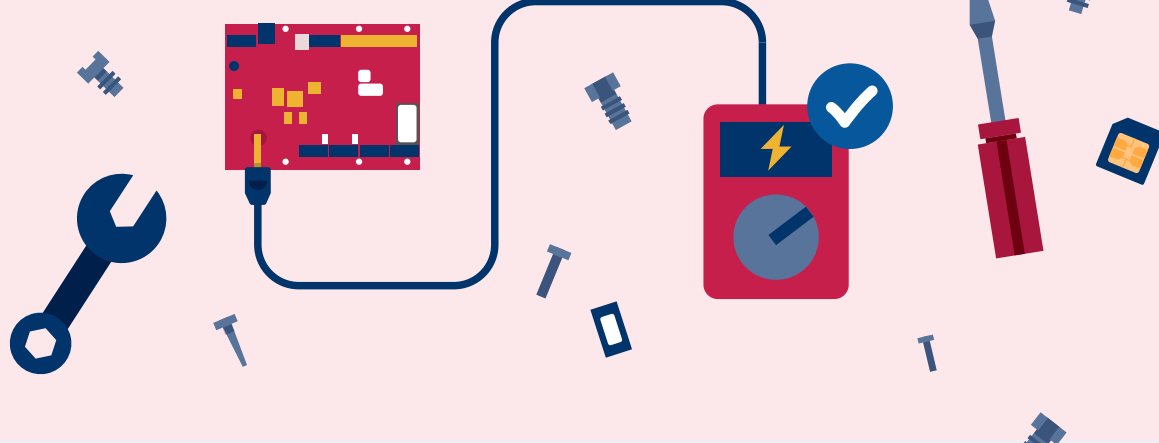


Network components

Step 5

Test existing components

Once you've determined which components of the existing system can be reused, the components should be tested to ensure compatibility.



Step 6

Define new equipment

Speak with your integrator to evaluate the new network and access control needs.

- ✓ How much will it cost?
- ✓ How long will it take to install?

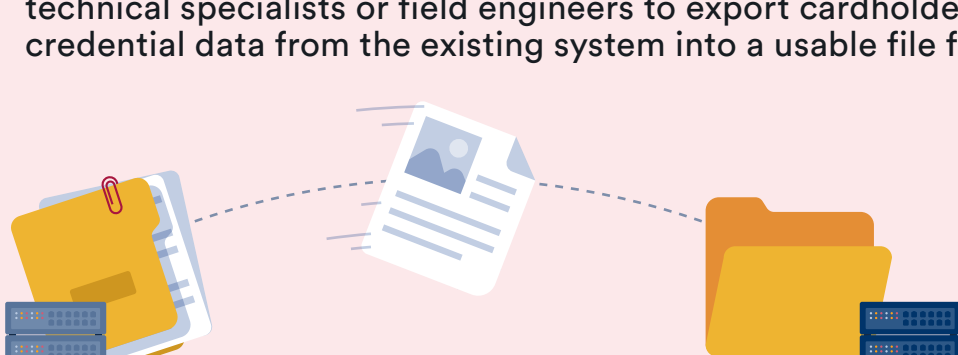


Step 7

Understand existing databases

How will you import existing cardholder and credential data into the new system?

To leverage existing third-party software data, get in contact with technical specialists or field engineers to export cardholder and credential data from the existing system into a usable file format.



Step 8

Plan the migration

To minimize downtime, carefully plan the following:



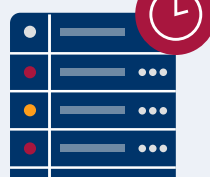
Dates of the migration



Stakeholders in charge



Communications about the change



Project timelines

Step 9

Cross-check the new IP system

Ask your integrator to do a complete walk-through of the new system before launching the migration.



Step 10

Launch and test the migration

Start the migration process with your integrator and have manufacturers on standby in case any problems arise with any of the new system components.



Ready for more? Get your copy of our detailed white paper to learn all about the benefits of migrating from a legacy access control system to an IP based one.

[Get the white paper now](#)

Genetec